



The Association of  
Biomolecular Resource  
Facilities

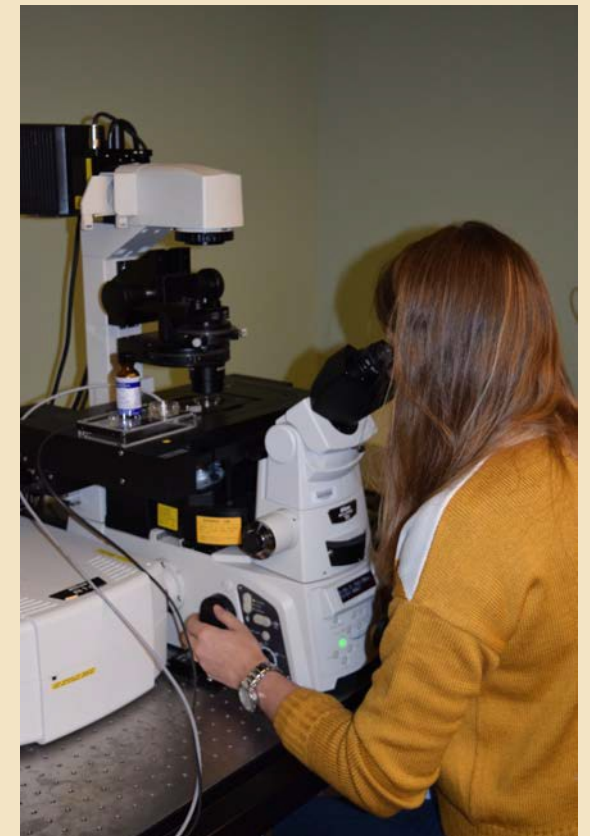
# Defining Excellence for Shared Resources Worldwide



# What is ABRF?

*International scientific society dedicated to advancing technologies, education and communication and reproducible research in operations of shared scientific resources.*

- ABRF is a non-profit professional membership organization and member of the Federation of American Societies of Experimental Biology (FASEB)
- Founded in 1989, ABRF currently includes over **1800** members working in biomedical laboratories in **16** countries representing academia, government and industry
- ABRF promotes research, technology, communication and education
- A **member-driven** society that relies on volunteers for ongoing activities
- Members access unique resources and professional opportunities





# What's Your Role?

Academic  
Researcher

Core Director/  
Manager

Core Facility  
Technologist

Corporate  
Researcher

Principal  
Investigator

Staff  
Scientist



## **ABRF – A Valuable Community for Core Administrators**

---

**Core Administrators** comprise a substantial portion of the ABRF membership and enjoy access to these helpful resources:

### **Core Administrators' Network: Coordinating Committee (CAN-CC)**

Organizes educational programming for ABRF online workshops, town halls, and annual meetings. Meets monthly to discuss current and emerging issues affecting core facilities. Develops surveys on best practices and resources for core operations.

### **ABRF Regional Chapters**

From the Northeast to the West Coast, these groups host accessible events for core administrators to learn from one another and address regional issues in practical terms. They provide connections to local corporate partners to support Core technology and operations.

### **Journal of Biomolecular Techniques (JBT)**

A unique, open-access publication that includes peer-reviewed content on trends and developments in core administration and research enabled by core facilities.

### **Discussion Forum**

Pose questions or ask for recommendations from ABRF peers. Share ideas and offer your suggestions.

### **ABRF Job Board**

Review current opportunities at Core facilities. Post new positions to recruit qualified personnel.

### ***Coming in 2022: ABRF Compensation Survey Report***

Benchmark your salary and benefits with others in similar roles at institutions throughout the country. Measure the impact of additional experience or training on future compensation potential.

[Learn more](#) about how to make the most of your ABRF membership.





## **ABRF – A Valuable Community for Core Directors**

---

**Core Directors** lead shared research resources that provide the services, consultation, and results that drive innovation and discovery. **Core Directors** balance the needs of researchers, administrators, and institutional leadership to ensure that Core facilities continue to offer efficient and effective return on investment in state-of-the-art technology to catalyze research advances.

ABRF membership provides access to unique professional development and peer networking opportunities for Core Directors at a wide range of facilities:

### **ABRF Annual Meeting**

This unique event brings together Core facilities leaders and Corporate Partners to discuss the technology and scientific advances that impact Core facilities. Designed by and for ABRF members, the ABRF Annual Meeting is the *can't miss event* for Core Directors to connect with colleagues who understand their challenges and are eager to exchange ideas and benchmark their operations.

### **Online Education Workshops and Town Hall Presentations**

Learn at your desktop. Updates on the latest technology developments are available year-round through workshops organized by the ABRF Education Committee, along with monthly virtual Town Hall sessions. These events enable members to exchange information on current challenges, tools, and resources.

### **ABRF Regional Chapters**

From the Northeast to the West Coast, these groups host accessible events for core administrators to learn from one another and address regional issues in practical terms. They provide connections to local corporate partners to support Core technology and operations.

### **ABRF Job Board**

Review current opportunities at Core facilities. Post new positions to recruit qualified personnel.

### ***Coming in 2022: ABRF Compensation Survey Report***

Benchmark your salary and benefits with others in similar roles at institutions throughout the country. Measure the impact of additional experience or training on future compensation potential.

[Learn more](#) about how to make the most of your ABRF membership.



## ABRF – A Valuable Community for Staff Scientists

**Staff Scientists** within Core facilities consult with researchers to design, plan, and implement their experiments and studies. Their expertise on the range of instruments and systems available within the Cores enables investigators to make the most of their time and effort to yield results to advance their research projects. Core **Staff Scientists** partner with users in diverse technology areas including **Flow Cytometry, Genomics, Imaging, Mass Spectrometry, Metabolomics, and Proteomics**.

ABRF membership provides access to unique professional development and peer networking opportunities for **Staff Scientists** at a wide range of facilities:

### ABRF Annual Meeting

This unique event brings together Core facilities leaders and Corporate Partners to discuss the technology and scientific advances that impact Core facilities. Designed by and for ABRF members, the ABRF Annual Meeting is the *can't miss event* for **Staff Scientists** to connect with colleagues who understand their challenges and are eager to exchange ideas and discuss common concerns.

### Online Education Workshops and Town Hall Presentations

Learn at your desktop. Updates on the latest technology developments are available year-round through workshops organized by the ABRF Education Committee, along with monthly virtual Town Hall sessions. These events enable members to exchange information on current challenges, tools, and resources.

### *Journal of Biomolecular Techniques (JBT)*

A unique, open-access publication that includes peer-reviewed content on trends and developments in core administration and research enabled by core facilities.

### Mentoring and Career Development

Connect with experienced professionals to support your growth through the ABRF Mentoring program. Access sample role descriptions and model career pathways to learn how roles are structured at similar institutions throughout the ABRF community.

[Learn more](#) about how to make the most of your ABRF membership.



## **ABRF – A Valuable Community for Technologists**

---

**Core Technologists** are essential contributors to the success of shared research resources. ABRF membership provides access to unique professional development and peer networking opportunities for Technologists in all types of biomolecular cores:

### **Online Education Workshops and Town Hall Presentations**

Learn at your desktop. Updates on the latest technology developments are available year-round through workshops organized by the ABRF Education Committee, along with monthly virtual Town Hall sessions. These events enable members to exchange information on current challenges, tools, and resources.

### **ABRF Regional Chapters**

From the Northeast to the West Coast, these groups host accessible events for core administrators to learn from one another and address regional issues in practical terms. They provide connections to local corporate partners to support Core technology and operations.

### **Mentoring and Career Development**

Connect with experienced professionals to support your growth through the ABRF Mentoring program. Access sample role descriptions and model career pathways to evaluate your

### **ABRF Job Board**

Review current opportunities at Core facilities. Post new positions to recruit qualified personnel.

### ***Coming in 2022: ABRF Compensation Survey Report***

Benchmark your salary and benefits with others in similar roles at institutions throughout the country. Measure the impact of additional experience or training on future compensation potential.

[Learn more](#) about how to make the most of your ABRF membership.